

Prelude and Fugue

Contrabass

B Li

Maestoso ♩ = 56

f pizz. arco

First musical staff, measures 1-7. It begins with a dynamic marking *f* and a 4/4 time signature. The notes are: G2 (whole), F2 (whole), E2 (whole), D2 (half). Measures 4-7 contain rests, followed by a pizzicato eighth-note pattern: G2, F2, E2, D2, C2.

8 **A** pizz.

Second musical staff, measures 8-15. It starts with measure 8, which begins with a pizzicato eighth-note pattern: G2, F2, E2, D2, C2. This is followed by measures 9-15, which contain rests, then another pizzicato eighth-note pattern: G2, F2, E2, D2, C2.

16 arco **Moderato** ♩ = 120
4

Third musical staff, measures 16-24. It starts with measure 16, which begins with an arco eighth-note pattern: G2, F2, E2, D2, C2. This is followed by measures 17-24, which contain rests, then a 4-measure whole rest.

25 **B** 6

Fourth musical staff, measures 25-34. It starts with measure 25, which begins with an arco eighth-note pattern: G2, F2, E2, D2, C2. This is followed by measures 26-34, which contain rests, then a 6-measure whole rest.

35

Fifth musical staff, measures 35-39. It contains an arco eighth-note pattern: G2, F2, E2, D2, C2.

40 **C**

Sixth musical staff, measures 40-45. It contains an arco eighth-note pattern: G2, F2, E2, D2, C2.

46

Seventh musical staff, measures 46-49. It contains an arco eighth-note pattern: G2, F2, E2, D2, C2.

50 **D**

Eighth musical staff, measures 50-53. It contains an arco eighth-note pattern: G2, F2, E2, D2, C2.

Contrabass

52 pizz.



arco

58

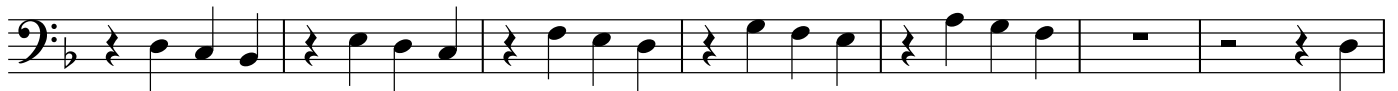
E

65

pizz.



72

F

arco

79



87

G

92



98

H

3

*ff*